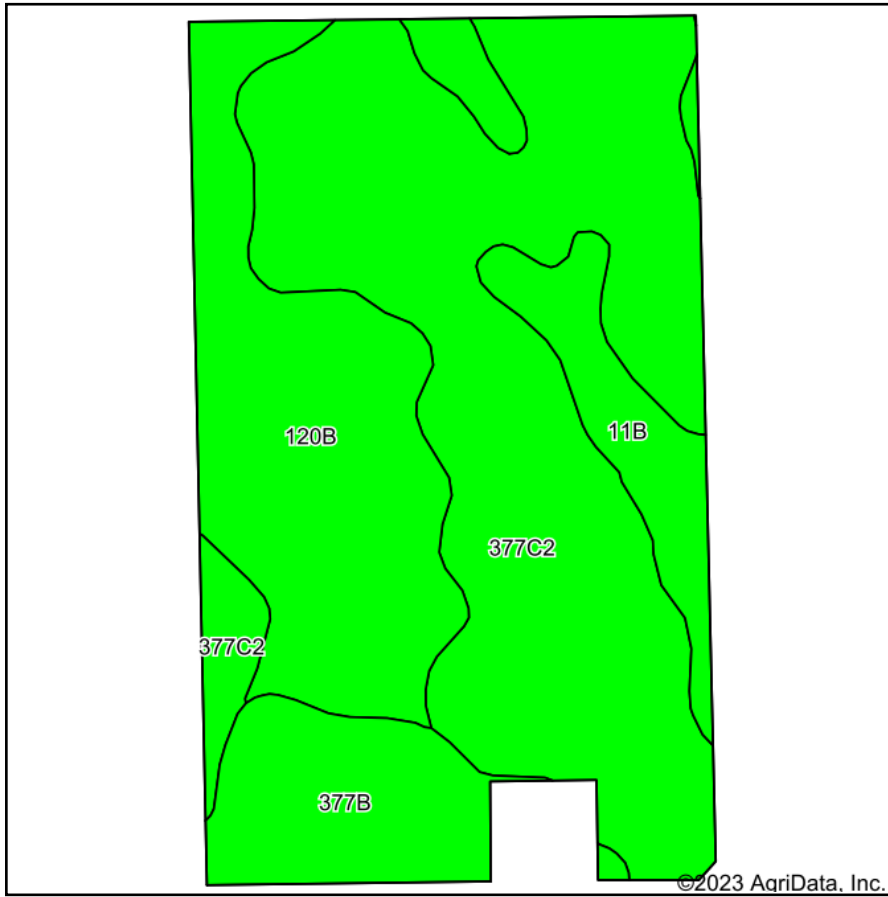
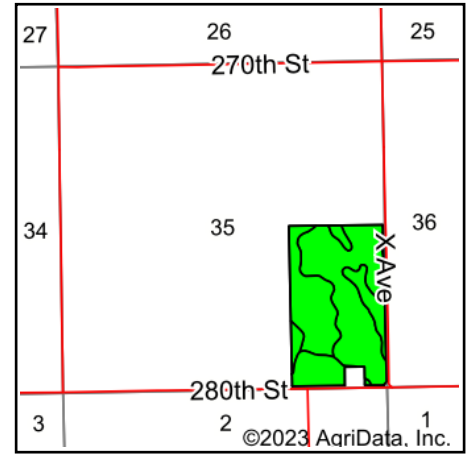


Soils Map



Soils data provided by USDA and NRCS.



State: **Iowa**
 County: **Tama**
 Location: **35-84N-13W**
 Township: **Oneida**
 Acres: **88.75**
 Date: **10/2/2023**



Maps Provided By:



Area Symbol: IA171, Soil Area Version: 27

Code	Soil Description	Acres	Percent of field	CSR2 Legend	Non-Irr Class *c	CSR2**	CSR
377C2	Dinsdale silty clay loam, 5 to 9 percent slopes, eroded	48.52	54.7%		IIIe	85	73
120B	Tama silty clay loam, 2 to 5 percent slopes	24.26	27.3%		Ile	95	95
377B	Dinsdale silty clay loam, 2 to 5 percent slopes	9.51	10.7%		Ile	94	90
11B	Colo-Ely complex, 0 to 5 percent slopes	6.46	7.3%		IIw	86	68
Weighted Average					2.55	88.8	80.5

**IA has updated the CSR values for each county to CSR2.

*c: Using Capabilities Class Dominant Condition Aggregation Method

Soils data provided by USDA and NRCS.